



## BURNDY CONNECT

You can have BURNDY in the palm of your hand. The BURNDY Connect app allows installers, inspectors, contractors, distributors and sales representatives access to real answers in real time. Correct crimping procedures, easily identified connectors, proper tooling choices, new products to market and much more are at your fingertips.

**BURNDY, LLC**  
7 Aviation Park Drive  
Londonderry, NH 03053  
**Customer Service**  
1-800-346-4175  
**Technical Service**  
1-800-451-4956

**CANADA**  
1-800-465-7051

**MEXICO**  
011-52-722-265-4400

**BURNDY Tool Service Center**  
Littleton Industrial Park  
Littleton, NH 03561  
1-800-426-8720

[www.hubbell.com](http://www.hubbell.com)

# BURNDY® TOOLS

## COMMERCIAL/INDUSTRIAL SEGMENT



**T3** TRACK  
TRACE  
TRANSMIT



# BURNDY TOOL SERVICE GETS IT DONE!

## GET IT FIXED

Tools repaired at our Littleton, NH facility, or any of our authorized warranty repair centers, receive a one-year warranty at the time of servicing. This warranty is issued regardless of the age of the tool returned.

## GET A REPLACEMENT

- Returned tools 1) beyond economic repair, or 2) discontinued and no longer repairable, can be replaced directly through the factory at a discounted price.
- Replacement tools are brand new and carry a new tool warranty.

## GET A LOANER

- Tools are available for up to 60 days at no charge.
- Coverage during the repair of a returned tool and urgent customer needs, as available.

## GET CALIBRATED

- Tool calibration can be factory checked for a flat fee of \$100.00.
- Calibrated tools will be returned with test data and a certificate of compliance.

## GET TRAINED

- Tool repair training is offered at the factory in Littleton, NH at no charge.
- Hands-on and individualized to accommodate specific customer needs and schedules.
- On-site training and calibration options also available.

## GET TECHNICAL

- Call 603-444-6781 or 800-426-8720 (toll-free) for any tooling related questions.
- Technical assistance is available for servicing and calibration questions. Talk directly with a service manager or senior service technician.

BURNDY® tools are designed, tested and assembled in the U.S. and most carry a 5-year limited warranty. Our PATRIOT® line of battery tools also have a lifetime warranty on the INFINITY DRIVE® transmission.



### ERGONOMIC

User safety and productivity are essential. BURNDY® continually strives to improve tool design by reducing operator fatigue and enhancing the overall user experience.



### DURABLE

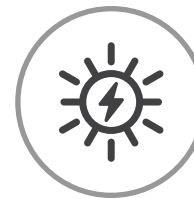
BURNDY® Tools are Professional Grade; engineered and manufactured with premium materials and workmanship for long life. Backed by The Power of Experience and exceptional warranties, ensuring industry professionals less down time and more completed work.



### SAFETY

In-house Lab Certification & Testing to Industry Standards: ANCE, ANSI, ASTM, CSA, IEC, IEEE, Military, NBR9326, NEMA, NUPIC, OSHA, SAE, UL Client Test Data Program (CTDP).

Trust the BURNDY® Engineered System for verifiable completed crimps.



### LED WORKLIGHT

An integrated LED will light the work area when working in dimly lit spaces.



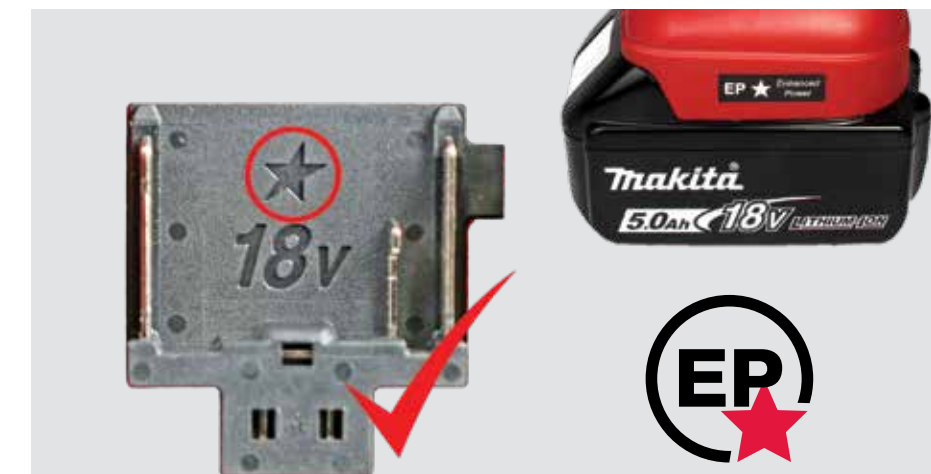
### WARRANTY

BURNDY® Tools carry a five year limited warranty.



### ENGINEERED IN U.S.A.

Designed, tested and assembled in the U.S.A.



### PATRIOT® SERIES with EP★ ENHANCED POWER

BURNDY® PATRIOT® Tools are designed to accept an expanded range of Makita 18V Lithium-Ion Batteries, identified by Makita Star Power. Multi-Ah Capability provides the user with more choices and flexibility than ever before. Accepts large capacity 6Ah to smaller capacity 2Ah batteries.

**More POWER, More FLEXIBILITY, More PRODUCTIVITY**



**PATRIOT® 46 SERIES & 46T3 SERIES**

2" Jaw Opening

355° Head Rotation

LED Worklight

Verification Light

C-Head Design (shown)  
Also offered in Latch Head

Manual Release Trigger  
Allows Partial Retraction

Activation Trigger

Patented, high-speed  
hydraulic pump system

Rubber Overmolded  
Ergonomic Handle

INFINITY DRIVE® Transmission  
with Lifetime Warranty

Conformally Coated PCB  
protects electronic circuitry  
to work in severe weather

Onboard GPS and  
Bluetooth® Technology

Accepts 2.0Ah to 6.0Ah  
Makita Lithium-Ion Batteries

# 15-TON LIGHT WEIGHT LATCH-HEAD & C-HEAD CRIMPERS

## PATRIOT® 46 SERIES & 46T3 SERIES



PUADPI  
Die Adapter



**T3** TRACK  
TRACE  
TRANSMIT

### FEATURES

- 355° head rotation
- Used with P dies; U dies with PUADPI adapter (sold separately)
- 2" jaw opening (C-Head)
- P15K Cutter die available; cuts up to 1.2" max diameter
- Light weight and ergonomically balanced
- Includes 2 batteries, charger and polymer carrying case
- EP Enhanced Power tools accept 2.0Ah to 6.0Ah Makita batteries

### T3 Technology Crimpers include:

- **TRACK** crimp locations with onboard GPS - **BURNDY Exclusive!**
- **TRACE** individual crimps with comments, photos, and output force validation
- **TRANSMIT** via Bluetooth® technology and sync data to the cloud



### MODELS

PAT46LWSLI	Tool, 3Ah, 120V AC, C-Head
PAT46LWSL5	Tool, 5Ah, 120V AC, C-Head
PAT46LWLI	Tool, 3Ah, 120V AC, Latch-Head
PAT46LWL5	Tool, 5Ah, 120V AC, Latch-Head
PAT46T3SU03A2	T3 Tool, 3Ah, 120V AC, C-Head
PAT46T3SU05A2	T3 Tool, 5Ah, 120V AC, C-Head
PAT46T3LU03A2	T3 Tool, 3Ah, 120V AC, Latch-Head
PAT46T3LU05A2	T3 Tool, 5Ah, 120V AC, Latch-Head

- Optional nylon pro bag available

CRIMPING CAPACITIES	TERMINALS & SPLICES	TAPS
Copper	#8 - 1500 kcmil	#14 - 1000 kcmil
Aluminum	#8 - 1250 kcmil	#8 - 1250 kcmil
ACSR	For Overhead Transmission & Distribution, see Sections H & I of the Current BURNDY Master Catalog	

### SPECIFICATIONS

Output Force	15 Tons
Die Style	P and U Style (with PUADPI)
Jaw Opening	2.00" (C-Head)
Operating Voltage	18 V-DC Lithium-Ion
Recharge Time	30 minutes (3.0Ah)
	45 minutes (5.0Ah)
Warranty	5 year limited warranty
	Lifetime warranty on INFINITY DRIVE®
	3 year on batteries and charger

### WEIGHT & DIMENSIONS

Tool Weight (without battery)	17.65 lbs (C-Head)
	15.50 lbs (Latch-Head)
Size	18.00" x 14.00" x 3.00" (C-Head)
	18.75" x 13.75" x 3.75" (Latch-Head)
T3 Tool Weight (without battery)	18.15 lbs (C-Head)
	16.00 lbs (Latch-Head)
T3 Size	18.44" x 14.13" x 3.26" (C-Head)
	18.59" x 15.18" x 3.26" (Latch-Head)

# PATRIOT® 750 SERIES & 750T3 SERIES



1.65" Jaw Opening

LED Worklight

Verification Light

Patented T-Track Alignment Guide for HYGROUND®

355° Head Rotation

Manual Release Trigger Allows Partial Retraction

Activation Trigger

Patented, high-speed hydraulic pump system

Rubber Overmolded Ergonomic Handle

INFINITY DRIVE® Transmission with Lifetime Warranty

Conformally Coated PCB protects electronic circuitry to work in severe weather

Accepts 2.0Ah to 6.0Ah Makita Lithium-Ion Batteries

Onboard GPS and Bluetooth® Technology

# 12-TON C-HEAD CRIMPERS

## PATRIOT® 750 SERIES & 750T3 SERIES



BURNDY U-Dies



**T3** TRACK  
TRACE  
TRANSMIT

### FEATURES

- 1.65" jaw opening
- Used with U dies
- C-head with 355° head rotation
- Patented T-Track Alignment Guide for HYGROUND® as well as other asymmetrical connectors
- Includes 2 batteries, charger and polymer carrying case
- EP Enhanced Power tools accept 2.0Ah to 6.0Ah Makita batteries

#### T3 Technology Crimpers include:

- **TRACK** crimp locations with onboard GPS - **BURNDY Exclusive!**
- **TRACE** individual crimps with comments, photos, and output force validation
- **TRANSMIT** via Bluetooth® technology and sync data to the cloud



MODELS	
PAT750LI	Tool, 3Ah, 120V AC
PAT750L5	Tool, 5Ah, 120V AC
PAT750CLI	Tool, Covered Head, 3Ah, 120V AC
PAT750CL5	Tool, Covered Head, 5Ah, 120V AC
PAT750T3U03A2	T3 Tool, 3Ah, 120V AC, C-Head
PAT750T3U05A2	T3 Tool, 5Ah, 120V AC, C-Head
PAT750T3C03A2	T3 Tool, Covered Head, 3Ah, 120V AC, C-Head
PAT750T3C05A2	T3 Tool, Covered Head, 5Ah, 120V AC, C-Head

- Optional nylon pro bag available

### SPECIFICATIONS

Output Force	12 Tons
Die Style	U Style
Jaw Opening	1.65"
Operating Voltage	18 V-DC Lithium-Ion
Recharge Time	30 minutes (3.0Ah)
	45 minutes (5.0Ah)
Warranty	5 year limited warranty
	Lifetime warranty on INFINITY DRIVE™
	3 years on batteries and charger

### WEIGHT & DIMENSIONS

Tool Weight	14.25 lbs (without battery)
Size	15.75" x 13.50" x 3.50"
T3 Tool Weight	14.85 lbs (without battery)
T3 Size	15.75" x 14.75" x 3.25"

CRIMPING CAPACITIES	TERMINALS & SPLICES	TENSION SLEEVES	TAPS	AERIAL CABLE	HYGROUND®
Copper	#8 - 750 kcmil	#8 Sol - 500 kcmil	#14 Sol - 500 kcmil	#6 - 500 kcmil	#8 - 500 kcmil
Aluminum	#8 - 750 kcmil	#8 Sol - 587.2 kcmil	#8 - 500 kcmil		
ACSR	#4 - 556.5 kcmil	#4 - 556.5 kcmil			
Ground Rod					1/2" - 1" Diameter

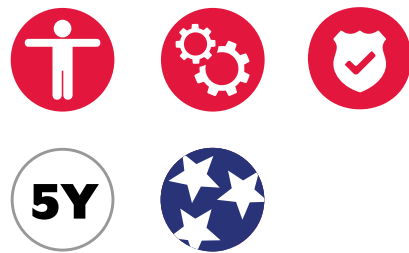
# 12-TON U-STYLE DIES

## FOR USE WITH 750 SERIES AND 46 SERIES CRIMP TOOLS



### FEATURES

- 12-ton dies for YA, YS, YA-A, YS-A style connectors
- For Copper: U-RT, U-RTW
- For Aluminum: U-ART
- Stainless steel design for long life
- Color coded to match corresponding BURNDY® connectors
- Wide dies are intended for use on long barrel terminals and splices; (YA/YS) only
- Die Sets sold separately
- Various U-Die Kits available
- PUADPI U-Die Adapter required for use in 15-ton 46 Series tools

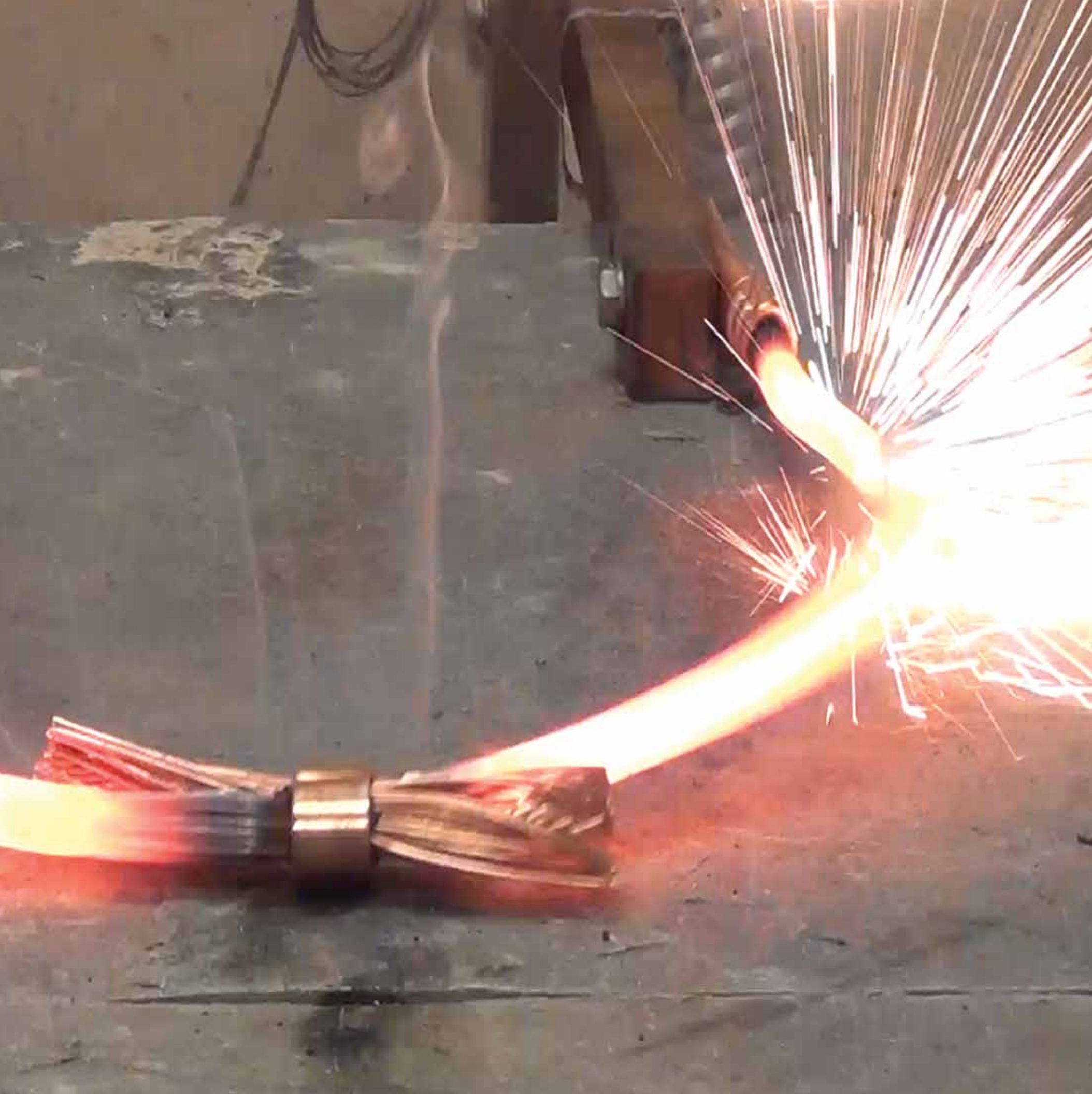


### DIE KIT MODELS

- UDIEKITAL: 15 sets of U-dies for crimping YA-A and YS-A aluminum terminals and splices, ranging from #6 AWG through 750 kcmil; die case included.
- UDIEKITCU: 15 sets of U-dies for crimping YA and YS copper terminals and splices, ranging from #6 AWG through 750 kcmil; die case included.
- UDIEKITHYGRD: 8 dies sets with die case. Seven die sets are used to install the BURNDY® HYGROUND® irreversible compression grounding connectors; the U2CABT die set is for pre-crimping 1/2", 5/8" and 3/4" ground rods for increased rotational resistance.



UDIEKITHYGRD



---

BURNDY® maintains and operates one of the largest connector laboratories in the electrical industry. BURNDY is certified to participate in the UL Client Test Data Program. This in-house testing capability ensures that each and every BURNDY® engineered tool, die and connector combination has met the criteria needed for ANSI and UL Listing.

---







# PATRIOT® 444S SERIES & 444ST3 SERIES

C-Head Design

355° Head Rotation

LED Worklight

Verification Light

Dieless System with range taking capability (No die needed)

Manual Release Trigger Allows Partial Retraction

Activation Trigger

Conformally Coated PCB protects electronic circuitry to work in severe weather

Accepts 2.0Ah to 6.0Ah Makita Lithium-Ion Batteries

Patented, high-speed hydraulic pump system

INFINITY DRIVE® Transmission with Lifetime Warranty

Rubber Overmolded Ergonomic Handle

Onboard GPS and Bluetooth® Technology

# 11-TON DIELESS C-HEAD CRIMPERS

## PATRIOT® 444S SERIES & 444ST3 SERIES



Unique 444S Crimp Embossment



**T3** TRACK  
TRACE  
TRANSMIT

### FEATURES

- New C-Head style for easy access and more flexibility
- Dieless System with range taking capability
- 355° Head rotation
- Ergonomically balanced
- Includes 2 batteries, charger and polymer carrying case
- EP Enhanced Power tools accept 2.0Ah to 6.0Ah Makita batteries

### T3 Technology Crimpers include:

- **TRACK** crimp locations with onboard GPS - **BURNDY Exclusive!**
- **TRACE** individual crimps with comments, photos, and output force validation
- **TRANSMIT** via Bluetooth® technology and sync data to the cloud



### MODELS

PAT444SLI	Tool, 3Ah, 120V AC
PAT444SL5	Tool, 5Ah, 120V AC
PAT444ST3U03A2	T3 Tool, 3Ah, 120V AC
PAT444ST3U05A2	T3 Tool, 5Ah, 120V AC

- Optional nylon pro bag available

- Connections are UL Listed to UL 486A-486B on Copper & Aluminum terminals and splices
- Comply with ANSI C119.4 on YDS-RL and YDS-RLNI Splices (ACSR, AAC, AAAC, ACAR)
- Qualified for use on YCP-L Compression Pulling Heads

### SPECIFICATIONS

Output Force	11 Tons
Die Style	Dieless
Operating Voltage	18 V-DC Lithium-Ion
Recharge Time	30 minutes (3.0Ah)
	45 minutes (5.0Ah)
Warranty	5 year limited warranty
	Lifetime warranty on INFINITY DRIVE®
	3 year on batteries and charger

### WEIGHT & DIMENSIONS

Tool Weight	14.80 lbs (without battery)
Size	15.62" x 14.12" x 3.25"
T3 Tool Weight	15.20 lbs (without battery)
T3 Size	16.90" x 14.95" x 3.25"

CRIMPING CAPACITIES	TERMINALS & SPLICES	HYPLUG™	FULL TENSION SPLICES
Copper	#4 - 1000 kcmil	#4 - 1000 kcmil	
Copper Flex	#4 - 1000 kcmil	#2 - 777 kcmil	
Aluminum	#4 - 1000 kcmil	#4 - 1000 kcmil	
ACSR, AAC, AAAC, ACAR			#4 - 556.6 kcmil



Latch Style Head

355° Head Rotation

**PATRIOT 644 SERIES**

Dieless System with range taking capability (No die needed)

Manual Release Trigger Allows Partial Retraction

Activation Trigger

Patented, high-speed hydraulic pump system

INFINITY DRIVE Transmission with Lifetime Warranty

Rubber Overmolded Ergonomic Handle

Conformally Coated PCB protects electronic circuitry to work in severe weather

Accepts 2.0Ah to 6.0Ah Makita Lithium-Ion Batteries

# 11-TON LATCH-HEAD CRIMPERS

## PATRIOT® 644 SERIES



### FEATURES

- 355° head rotation
- Dieless system
- Range taking capabilities
- Ergonomically balanced
- Includes 2 batteries, charger, and polymer carrying case
- Optional nylon pro bag available
- EP Enhanced Power tools accept 2.0Ah to 6.0Ah Makita batteries



### MODELS

PAT644LI	Tool, 3Ah, 120V AC
PAT644L5	Tool, 5Ah, 120V AC
PAT644LILCB	Tool, No Charger/Batteries

- Connections are UL Listed to UL 486A-486B on Copper & Aluminum terminals and splices
- Comply with ANSI C119.4 on YDS-RL and YDS-RLNI Splices (ACSR, AAC, AAAC, ACAR)
- Qualified for use on YCP-L Compression Pulling Heads

### SPECIFICATIONS

Output Force	11 Tons
Die Style	Dieless
Weight	14.55 lbs (without battery)
Size	15.62" x 14.12" x 3.25"
Operating Voltage	18 V-DC Lithium-Ion
Recharge Time	30 minutes (3.0Ah)
	45 minutes (5.0Ah)
Warranty	5 year limited warranty
	Lifetime warranty on INFINITY DRIVE®
	3 year on batteries and charger

CRIMPING CAPACITIES	TERMINALS & SPLICES	HYPLUG™	FULL TENSION SPLICES
Copper	#4 - 1000 kcmil	#4 - 1000 kcmil	
Copper Flex	#2 - 777 kcmil	#2 - 777 kcmil	
Aluminum	#6 - 900 kcmil	#6 - 900 kcmil	
ACSR, AAC, AAAC, ACAR			#4 - 556.6 kcmil



**PATRIOT® 81K2 SERIES**

Latch Style Head

360° Head Rotation

Unique Connector Guides  
(Shown with large size)

4-POINT® Dieless  
System with range  
taking capability  
(No die needed)

Manual Release Trigger  
Allows Partial Retraction

Activation Trigger

Accepts 2.0Ah to 6.0Ah  
Makita Lithium-Ion Batteries

Patented, high-speed  
hydraulic pump system

INFINITY DRIVE® Transmission  
with Lifetime Warranty

Rubber Overmolded  
Ergonomic Handle

Conformally Coated PCB  
protects electronic circuitry  
to work in severe weather

# 6-TON DIELESS LATCH-HEAD CRIMPERS

## PATRIOT® 4-POINT® 81K2 SERIES



Shown with large connector guides (included)

### FEATURES

- Dieless system
- Range taking capabilities
- Unique crimping guides for improved reliability and ease of use (2 sizes included with tool)
- 360° head rotation
- Mechanical ram release
- Includes guides, 2 batteries, charger, and carrying case
- Optional nylon pro bag available
- EP Enhanced Power tools accept 2.0Ah to 6.0Ah Makita batteries



Small Guides:  
Copper #8-4 AWG  
Aluminum #8-6 AWG



Large Guides:  
Copper #3 AWG-#250 kcmil  
Aluminum #5-3/0 AWG



### MODELS

PAT81K2U03A2	Tool, 3Ah, 120V AC, Hard Case
PAT81K2U05A2	Tool, 5Ah, 120V AC, Hard Case
PAT81K2U03A3	Tool, 3Ah, 120V AC, Pro Bag
PAT81K2U05A3	Tool, 5Ah, 120V AC, Pro Bag



### SPECIFICATIONS

Output Force	6 Tons
Tool Weight	11.05 lbs (without battery)
Size	15.20" x 14.93" x 3.25"
Die Style	Dieless
Operating Voltage	18 V-DC Lithium-Ion
Recharge Time	30 minutes (3.0Ah)
	45 minutes (5.0Ah)
Warranty	5 year limited warranty
	Lifetime warranty on INFINITY DRIVE®
	3 year on batteries and charger

CRIMPING CAPACITIES	TERMINALS	SPLICES	HYPLUG™
Copper	#8 AWG - 1000 kcmil	#8 AWG - 1000 kcmil	
Copper Flex	#8 AWG - 777.7 kcmil	#8 AWG - 777.7 kcmil	
Aluminum	#8 AWG - 750 kcmil	#8 AWG - 750 kcmil	#8 AWG - 750 kcmil

# FORCE GAUGES

USE WITH BATTERY AND SELF-CONTAINED HYDRAULIC CRIMPERS ONLY



## FEATURES

- Not recommended for remote powered heads (see PT11018 in-line pressure gauge for 10,000 psi pumps)
- Easy to read dials
- Custom U die blanks with detent (12- & 15-ton tools)
- Custom ram puck and v-block gauge adapters (11-ton dieless tools)
- Comes complete with polymer carry case to protect blanks, adapters, and gauge; includes operating and maintenance manual



MODELS	
FORCEGAUGE1215	For use with 12- & 15-ton tools: Y750HSXT, PAT750 Series, and PAT46 Series (with PUADPI Adapter)
PT292792	For use with 12-ton tools: Y35 Series and Y39 Series
FORCEGAUGE11	For use with 11-ton dieless tools: Y644HSXT, PAT644 Series, and PAT444S Series

SPECIFICATIONS	FORCEGAUGE1215	PT292792	FORCEGAUGE11
Tool Weight	2.7 lbs	2.7 lbs	2.7 lbs
Size	8.30" x 4.30" x 1.50"	9.25" x 3.88" x 2.00"	9.00" x 3.98" x 1.24"
Warranty	1 year limited warranty		



# PATRIOT® PATMD-LW CU/AL SERIES



Newly Designed Jaw & Pin for safe & easy removal of interchangeable jaws

Locking Jaw Tabs

Trigger Safety Lock

Activation Trigger

Manual Release Trigger allows partial retraction

Accepts 2.0Ah to 6.0Ah Makita Lithium-ion Batteries

350° Rotatable Head

Scissor-Action Interchangeable Crimp & Cut Jaws

LED Worklight

Ergonomic Grip Alignment Area

INFINITY DRIVE® Transmission with Lifetime Warranty

Compact Size & Light Weight

Conformally Coated PCB protects electronic circuitry to work in severe weather



# 6-TON SCISSOR ACTION CRIMPERS/CUTTERS

## PATRIOT® IN-LINE® LIGHT WEIGHT SERIES




### FEATURES

- Light weight, compact and ergonomic design
- Interchangeable scissor action crimping and cutting jaws
- Proprietary locking jaw tabs
- Clearly engraved cut jaw markings for easy identification
- Safety trigger lock
- LED Worklight
- Includes 2 batteries, charger, and utility tool bag
- Optional polymer carry case or nylon pro bag available
- EP Enhanced Power tools accept 2.0Ah to 6.0Ah Makita batteries



### INTERCHANGEABLE JAW ASSEMBLIES

PATMD6LWJAW	Crimp Jaw with BG/D3 grooves	 O & D3 Jaws
PATMD68LWJAW	Crimp Jaw with O/D3 grooves	
PATMD66LWJAW	Crimp Jaw with D3 groove only	 D3 Only Jaws Snub-nose
PATMDXPJLWJAW	Crimp Jaw with X, P, & J grooves	
PATMD430LWJAW	Dieless Crimp Jaw for #4 - 3/0 AWG	 XPJ Jaws
PATMDCUTLWJAW	Cutting Jaw with ACSR/AL/CU blades	
PATMDCUTCLWJAW	Cutting Jaw with CU/AL blades	 430 Dieless Jaws
PATMDCUTGLWJAW	Cutting Jaw with GUY blades	
		 Cutter Jaws

### MODELS

#### CRIMPERS ONLY

PATMD6LW	BG/D3, 3Ah, AC
PATMD68LW	O/D3, 3Ah, AC
PATMD66LW	D3, 3Ah, AC
PATMD6LW5	BG/D3, 5Ah, AC
PATMD68LW5	O/D3, 5Ah, AC
PATMD66LW5	D3, 5Ah, AC

#### CU/AL CUTTERS & CRIMP/CUT KITS

PATMDCUTCLW	CU/AL Jaw, 3Ah, AC
PATMDCUTCLW5	CU/AL Jaw, 5Ah, AC
PATMD6LWWCCJ	BG/D3 & CU/AL, 3Ah, AC
PATMD68LWWCCJ	O/D3 & CU/AL, 3Ah, AC
PATMD66LWWCCJ	D3 & CU/AL, 3Ah, AC
PATMD6LW5WCCJ	BG/D3 & CU/AL, 5Ah, AC
PATMD68LW5WCCJ	O/D3 & CU/AL, 5Ah, AC

### SPECIFICATIONS

Output Force	6 Tons
Tool Weight	5.55 lbs (without battery)
Length	PATMD6LW 18.73"
	PATMD68LW 18.73"
	PATMD66LW 17.85"
	PATMDCUTCLW 19.25"
Die Style	W and X (with crimping jaws)
Operating Voltage	18 V-DC Lithium-Ion
Recharge Time	30 minutes (3.0Ah)
	45 minutes (5.0Ah)
Warranty	5 year limited warranty
	Lifetime warranty on INFINITY DRIVE®
	3 years on batteries and charger

CRIMPING CAPACITIES	TERMINALS & SPLICES	FULL-TENSION SLEEVES	TAPS	STIRRUPS
Copper	#8 AWG - 500 kcmil		#10 AWG - 2/0 AWG	
Copper Flex	#8 AWG - 350 kcmil			
Aluminum (AAC)	#8 AWG - 350 kcmil	#6 AWG - 4/0 AWG	#14 AWG - 4/0 AWG	#2 AWG - 4/0 AWG
ACSR		#10 AWG - 4/0 AWG	#14 AWG - 4/0 AWG	#6 AWG - 4/0 AWG

CUTTING CAPACITIES	ACSR (26/7)	ALUMINUM (AAC)	COPPER (SOFT DRAWN)	GUY WIRE (EHS)
ACSR Jaw	556.6 kcmil	636 kcmil	350 kcmil	-
CU/AL Jaw	-	636 kcmil	600 kcmil	-
GUY Jaw	-	-	-	3/8"

# THE BURNDY® ENGINEERED SYSTEM

Our mark means no guesswork. It starts with the BURNDY® Engineered System of coordinating dies, connectors and tools. It ends with safe, easy and inspectable industry compliant connections verified by the BURNDY bug. Behind every embossment is over 90 years of innovation, testing and support.



We're accountable. Every UL Listed compression connection made with the proper BURNDY® tool, die and connector combination now comes with a 5-year warranty.



The Mark of Inspectability and Quality Assurance



Our products are designed to work together to meet stringent, accepted quality standards. When improving our products or debuting new ones, we are committed to ensuring they continue to work with the BURNDY® items you already have. There is no substitute for the BURNDY® Engineered System.

# PATRIOT® 1500 SERIES



Stainless Steel  
Tooth Guards for  
longer life and  
precision cutting

Large, New Cutting  
Blade Design  
Broadest Overall Cutting  
Capacity in its Class

LED Worklight  
improves cutting  
visibility

Rubber Overmolded  
Ergonomic Handle

Conformally Coated PCB  
protects electronic circuitry  
to work in severe weather

Large, Non-Skid Bumper  
for stability and safe  
cutting

Forward/Reverse Switch  
with Locking Position for  
added safety

Variable Speed Trigger

Accepts 2.0Ah to 6.0Ah  
Makita Lithium-ion Batteries



Stainless Steel  
Tooth Guards



LED Worklight



Stabilizing Bumper

# BATTERY CABLE CUTTER FOR COPPER & ALUMINUM

## PATRIOT® 1500 SERIES



### FEATURES

- Broadest overall cutting capacity in its class
- Large, new cutting blade design
- Mechanically driven
- Variable speed trigger
- Forward/Reverse switch features a locking position
- Large, strategically placed, non-skid bumper
- LED Worklight
- Ergonomic design for improved balance and reduced user fatigue
- Includes 1 battery, charger, and polymer carrying case
- Optional nylon pro bag available
- EP Enhanced Power tools accept 2.0 to 6.0Ah Makita batteries



### MODELS

PATCUT1500LI	Tool, 3.0Ah, 120V AC
PATCUT1500L5	Tool, 5.0Ah, 120V AC
PATCUT1500LCB	Tool, No Charger/Battery

### CUTTING CAPACITIES

### CONDUCTOR SIZE

Aluminum	1500 kcmil
Copper Flex	1250 kcmil
Copper - Soft Drawn	1000 kcmil
Copper - Hard Drawn	750 kcmil

**Do Not Cut Steel or ACSR**

### SPECIFICATIONS

Tool Weight	6.90 lbs (without battery)
Size	15.5" x 6.0" x 4.38"
Operating Voltage	18 V-DC Lithium-Ion
Recharge Time	30 minutes (3.0Ah)
	45 minutes (5.0Ah)
Warranty	3 year limited warranty (excluding blades)
	3 year on battery and charger

# PATRIOT® 245 SERIES

Latch-Head Design with  
180° Head Rotation



Manual Release Trigger  
Allows Partial Retraction

Activation Trigger

Accepts 2.0Ah to 6.0Ah  
Makita Lithium-Ion Batteries

Patented, high-speed  
hydraulic pump system

Rubber Overmolded  
Ergonomic Handle

INFINITY DRIVE™  
Transmission with  
Lifetime Warranty

Conformally Coated PCB  
protects electronic circuitry  
to work in severe weather

# 6-TON HYDRAULIC CUTTERS

## PATRIOT® 245 SERIES



### FEATURES

- 180° head rotation
- Cuts up to 2.45" diameter copper/aluminum cable
- Specialized latch style cutting head for interference-free closure for mid-span work
- Ergonomic design, overmolded handle
- Includes 2 batteries, charger, and polymer carrying case
- Optional nylon pro bag available
- EP Enhanced Power tools accept 2.0Ah to 6.0Ah Makita batteries



### MODELS

PATCUT245LI	Tool, 3Ah, 120V AC
PATCUT245L5	Tool, 5Ah, 120V AC
PATCUT245LILCB	Tool, No Charger/Batteries

### SPECIFICATIONS

Output Force	6 Tons
Tool Weight	12.20 lbs (without battery)
Size	18.13" x 13.50" x 3.50"
Operating Voltage	18 V-DC Lithium-Ion
Recharge Time	30 minutes (3.0Ah)
	45 minutes (5.0Ah)
Warranty	5 year limited warranty (excluding blades)
	Lifetime warranty on INFINITY DRIVE®
	3 year on batteries and charger

### CUTTING CAPACITIES

### CONDUCTOR SIZE

Copper	Up to 2.45" O.D.
Aluminum	Up to 2.45" O.D.

**For Copper and Aluminum cable only.  
Do not cut steel, ground rod, rebar or guy wire.**

## PATRIOT® 129 SERIES

Latch-Head Design  
with 180° Head Rotation

Manual Release Trigger  
Allows Partial Retraction

Activation Trigger

Accepts 2.0Ah to 6.0Ah  
Makita Lithium-Ion Batteries

Patented, high-speed  
hydraulic pump system

Rubber Overmolded  
Ergonomic Handle

INFINITY DRIVE™ Transmission  
with Lifetime Warranty

Conformally Coated PCB  
protects electronic circuitry  
to work in severe weather



# 7-TON HYDRAULIC CUTTERS

## PATRIOT® 129 SERIES



### FEATURES

- Overmolded handle and ergonomic design
- One-handed operation for advance, retract and hold
- Specialized latch style cutting head for interference-free closure for mid-span work
- Includes 2 batteries, charger, and polymer carrying case
- Optional nylon pro bag available
- EP Enhanced Power tools accept 2.0Ah to 6.0Ah Makita batteries



### MODELS

PATCUT129LI	Tool, 3Ah, 120V AC
PATCUT129L5	Tool, 5Ah, 120V AC
PATCUT129LILCB	Tool, No Charger/Batteries

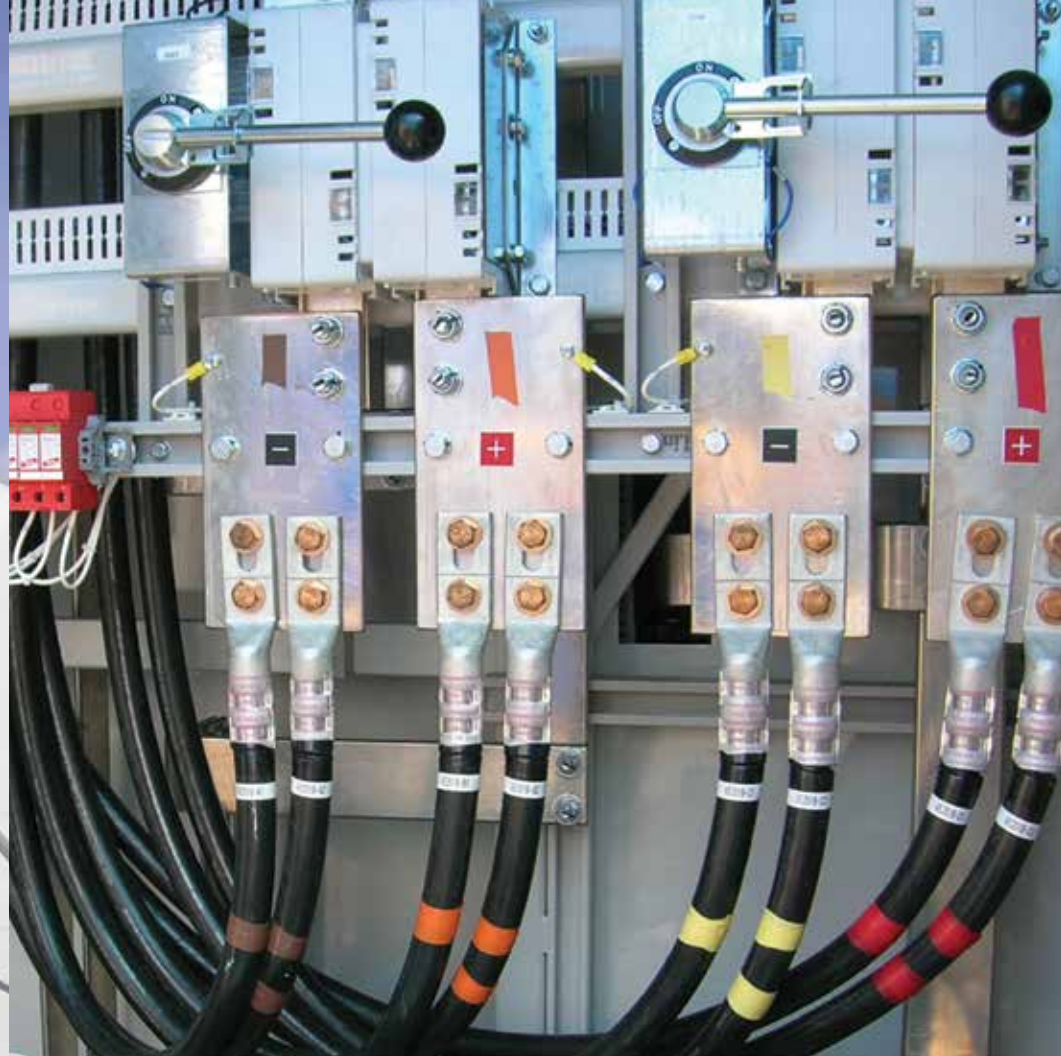
### SPECIFICATIONS

Output Force	7 Tons
Tool Weight	9.85 lbs (without battery)
Size	14.50" x 13.50" x 3.5"
Operating Voltage	18 V-DC Lithium-Ion
Recharge Time	30 minutes (3.0Ah)
	45 minutes (5.0Ah)
Warranty	5 year limited warranty (excluding blades)
	Lifetime warranty on INFINITY DRIVE®
	3 year on batteries and charger

### CUTTING CAPACITIES

Copper Cable	1.29" diameter
Aluminum Cable	1.29" diameter
ACSR	1113 kcmil
Ground Rod	5/8" diameter
Rebar	1/2" diameter
Soft Steel Bolts	5/8" diameter
Standard Guy	1/2" diameter
EHS Guy	3/8" diameter





---

BURNDY® tools are designed to withstand the diverse environments electrical workers face every day.

---

**BURNDY®  
TOOLS**

# OEM PNEUMATIC PRESS

INSTALLS #8 - 4/0 AWG

## FEATURES

- Customizable clear safety guard for left, right, or front feed cable entry
- Guarded foot switch
- Adjustable connector locator
- Cycle counter
- Accommodates UM, U and W dies



MODEL	
OEM840NCP	Pneumatic Bench Press

SPECIFICATIONS	
Weight	61.0 lbs
Size	22.75" x 12.38" x 10.25" (18.56" L with air gauge)
Die Style	UM, U, W Styles
Crimp Speed	3 seconds (approximately)
Life Cycles	2.5 M cycles (min)
Air Pressure	90-100 PSI
Connector Port	3/8" NPT female thread
Warranty	2 year limited warranty

High speed for high productivity.

Great for medium HYDENT™ applications.



UM Nest/Indenter



UM Crimped Terminal

CRIMPING CAPACITIES	TERMINALS	HYLUG™ TYPE YAD-M
Copper	#8 AWG - 4/0 AWG	
Copper Flex (DLO)		#8 AWG - 4/0 AWG

# DIELESS, FRONT & SIDE LOAD, FERRULE CRIMPERS

## FULL CYCLE RATCHET TOOLS FOR #26 - #1/0 AWG FERRULES

### FEATURES

- Front load crimping position (YF2210FL)
- Front & Side load crimping position (YF268CFSL)
- Dieless crimping (YF2210FL, YF268CFSL)
- Interchangeable side load dies (YF261CSKIT)
- UL Listed connections when used with UL Listed Ferrules (YF268CFSL, YF261CSKIT)
- Full cycle ratchet mechanism
- Ratchet release lever
- Low handle force reduces hand strain
- For use with covered and bare copper ferrules



YF2210FL  
Square  
Crimp Profile



Front & Side Load  
Capability

MODEL	
YF2210FL †	Dieless, Front Load, Ferrule Tool
YF268CFSL	Dieless, Front & Side Load, Ferrule Tool
YF261CSKIT	Kit, Side Load with (3) Interchangeable Dies, Ferrule Tool

SPECIFICATIONS	YF2210FL †	YF268CFSL	YF261CSKIT
Tool Weight	0.8 lbs	0.65 lbs	1.25 lbs
Size	7.75" x 2.38 x 1.00"	7.10" x 2.70" x 0.90"	10.00" x 2.70" x 0.90"
Die Style	Dieless	Dieless, Rotatable	Interchangeable Dies
Warranty	5 year limited warranty		

CRIMPING CAPACITIES	FERRULES * TYPE YF	FERRULES * TYPE YF-UI	FERRULES † TYPE YF-IDL, YF-ITL, YF-IWL, YFTW-DL	FERRULES † TYPE YF-UIL
Copper, Covered	#22 - #10 AWG		#26 - #8 AWG	#26 - #1/0 AWG
Copper, Bare		#22 - #10 AWG		#20 - #2 AWG

\* Not UL Listed

† Not currently UL Listed when using the YF2210FL tool.



Interchangeable Dies:  
YF2610D (#26-10 AWG)  
YF864D (#8-4 AWG)  
YF21D (#2-1/0 AWG)

# HYTOOL™ ERGONOMIC FULL CYCLE RATCHET TOOL

FOR #12 - #2 AWG STRANDED, SOLID, AND FLEX



## FEATURES

- Overmolded comfort grip handles
- Easy groove identification with color coded dies
- UL Listed/CSA Certified connections when used with recommended BURNDY® terminals/splices
- Die index embossment for all 6 wire ranges
- Emergency release mechanism in case of misalignment or mistaken die choice
- Kits available with a selection of BURNDY® connectors in a sturdy metal carrying case



MODELS	
Y122CMR	Hand Ratchet Tool for #12-2 AWG copper connectors
Y122CMRKIT	Kit containing tool, select long barrel connectors and case
Y122CMRCIKIT	Kit containing tool, select standard barrel connectors and case

SPECIFICATIONS	
Tool Weight	1.3 lbs
Size	10.50" x 3.00" x 1.00"
Die Style	Rotating Die Wheel
Warranty	5 year limited warranty

CRIMPING CAPACITIES	TERMINALS	SPLICES	TAPS TYPE YC-L
Copper	#12 AWG - #2 AWG	#12 AWG - #2 AWG	#10 AWG - #4 AWG
Copper Flex	#12 AWG - #2 AWG	#12 AWG - #2 AWG	



# HYTOOL™ ERGONOMIC FULL CYCLE RATCHET TOOL

## HAND-HELD TOOLS FOR #22 - #10 AWG NYLON/VINYL & BARE



### FEATURES

- Ratchet mechanism does not allow handles to open until full cycle is complete
- Stop plate ensures proper location for consistent reliable connection
- Die Inspection Gauges available (sold separately)
- Easy groove identification with color coded dies
- Ratchet release lever in case of misalignment



### MODELS

MRE1022B	Full ratchet hand tool for Uninsulated, #22-10 AWG
MRE1022NV	Full ratchet hand tool for Nylon/Vinyl Insulated, #22-10 AWG

### SPECIFICATIONS

Tool Weight	1.3 lbs
Size	10.50" x 3.00" x 1.00"
Die Style	Permanent Dies
Warranty	5 year limited warranty

CRIMPING CAPACITIES	TERMINALS	SPLICES
Uninsulated (Bare)	#22 AWG - #10 AWG	#22 AWG - #10 AWG
Nylon/Vinyl Insulated	#22 AWG - #10 AWG	#22 AWG - #10 AWG

# MECHANICAL ROTATING CRIMP TOOL

## FOR #8 - 4/0 AWG UNINSULATED – TERMINALS AND SPLICES



### FEATURES

- Heat treated steel jaws
- Spring loaded mechanism locks die wheel into position
- Multiple crimp selection with rotatable die wheels
- Die index embossment for inspectability
- Ratchet release lever in case of misalignment



### MODELS

MRC840	Mechanical Rotating Crimp Tool for Copper
MRC840AL	Mechanical Rotating Crimp Tool for Aluminum

### SPECIFICATIONS

Tool Weight	8.3 lbs
Size	26.00" x 8.00" x 1.50"
Die Style	Rotating Die Wheel
Warranty	5 year limited warranty

CRIMPING CAPACITIES	TERMINALS	SPLICES
Copper	#8 AWG - 4/0 AWG	#8 AWG - 4/0 AWG
Aluminum	#8 AWG - 4/0 AWG	#8 AWG - 4/0 AWG

# MANUAL CABLE CUTTERS

## FOR COPPER & ALUMINUM



### FEATURES

- Rugged, high quality steel cutting blades
- Fiberglass handles with soft grips
- Excellent cutting edge performance
- Minimal cable distortion



### MODELS

MCC600	Manual Cable Cutter, Max 600 kcmil CU/AL
MCC1000	Manual Cable Cutter, Max 1000 kcmil CU/AL

SPECIFICATIONS	MCC600	MCC1000
Tool Weight	3.5 lbs	9.0 lbs
Overall Length	21.00"	32.00"
Max. Insulation Dia.	1.31"	1.90"
Warranty	1 year limited warranty (excluding blades)	

CUTTING CAPACITIES	MCC600	MCC1000
Copper	Up to 600 kcmil	Up to 1000 kcmil
Aluminum	Up to 600 kcmil	Up to 1000 kcmil

# RATCHET CABLE CUTTERS

## FOR COPPER & ALUMINUM



### FEATURES

- Rugged, high quality steel cutting blades
- Excellent cutting edge performance
- Minimal cable distortion



### MODELS

RCC600E	Ratchet Cable Cutter, Max 600 kcmil CU/AL
RCC750HD	Ratchet Cable Cutter, Max 750 kcmil CU/AL
RCC1000	Ratchet Cable Cutter, Max 1000 kcmil CU/AL

SPECIFICATIONS	RCC600E	RCC750HD	RCC1000
Tool Weight	1.3 lbs	2.4 lbs	5.0 lbs
Overall Length	10.50"	10.50"	20.00"
Max. Insulation Dia.	1.05"	1.62"	2.38"
Warranty	1 year limited warranty (excluding blades)		

CUTTING CAPACITIES	RCC600E	RCC750HD	RCC1000
Copper	Up to 600 kcmil	Up to 750 kcmil	Up to 1000 kcmil
Aluminum	Up to 600 kcmil	Up to 750 kcmil	Up to 1000 kcmil



# TORQUE WRENCHES

## MICRO-ADJUSTABLE PROFESSIONAL GRADE, HAND-OPERATED



### FEATURES

- Ratcheting, calibrated, dual direction
- Positive lock with spring-loaded pull-down lock ring
- Individually serialized with matching certificate of calibration traceable to N.I.S.T.
- ASME B107.14M-2004 and ISO 6789
- For use on any mechanical connection with torque values within range of specific torque wrench



### MODELS

BTW30150	Torque range 30 - 150 in-lbs; 10.25" long; 3/8" drive
BTW150750	Torque range 150 - 750 in-lbs; 16.00" long; 3/8" drive
BTW1575F12	Torque range 15 - 75 ft-lbs; 16.00" long; 1/2" drive

### SPECIFICATIONS

Accuracy	±4% clockwise; ±6% counter clockwise of indicated value clockwise, from 20% to 100% of full scale
Applicable Standards	ASME B107.14M-2004; ISO 6789
Calibration	Traceable to N.I.S.T.
Warranty	1 year limited warranty





---

BURNDY® Tools are designed, tested and assembled in the U.S. and most carry a 5-year limited warranty. Our PATRIOT® line of battery tools also have a lifetime warranty on the INFINITY DRIVE® transmission.

---

